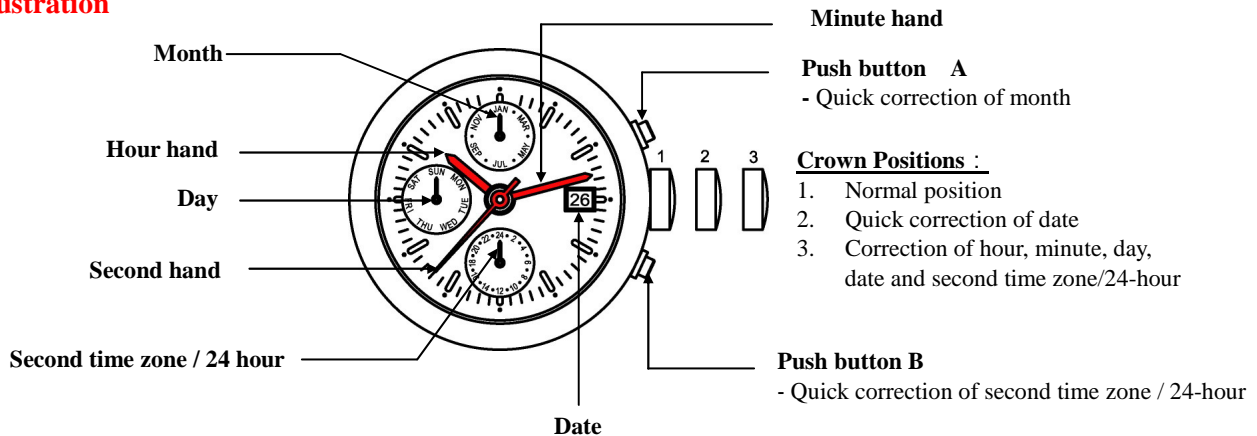
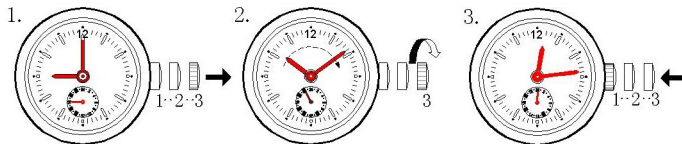


Function : Month-date-day Second time zone / 24-hour

Illustration

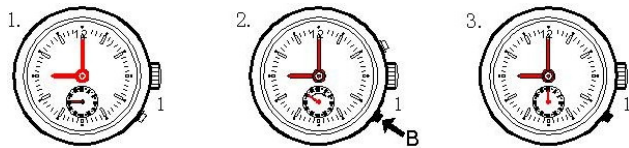


A. Set the time-Hour, Minute and 24-Hour



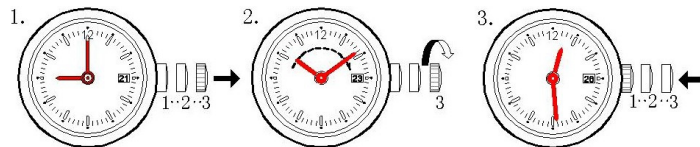
1. Pull the crown out to position 3.
2. Turn the crown clockwise to set the hour, minute and 24-hour hands to the desired time.
3. Push the crown back to position 1 .

B. Set the Second Time Zone

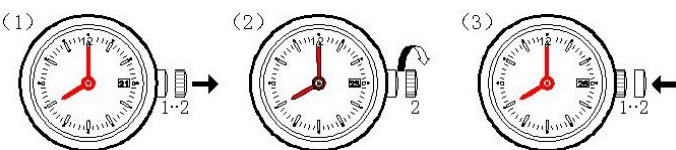


1. Set the crown at position 1.
2. Press B step-by-step to advance the hand of the second time zone by one hour per step until the desired time is set.
3. Stop pressing the button after finished the setting.

C. Set the Date



1. Pull the crown to position 3 .
2. Turn the crown clockwise. The date will advance 1 day when the time reaches 00:00midnight. Continue to turn the crown until the desired date is set.
3. Push the crown back to position 1.

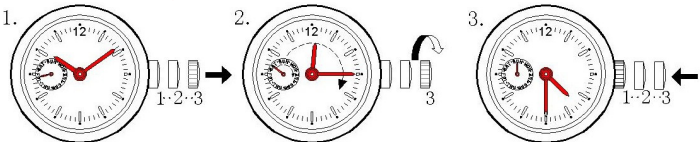


Quick Correction of Date :

1. Pull the crown out to position 2 .
2. Turn the crown clockwise step-by-step to the desired date.
3. Push the crown back to position 1 .

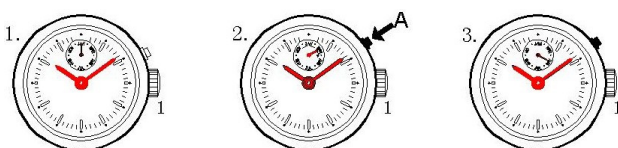
!! Attention !! : please Do Not set it between 21:00 and 00:30 midnight

D. Set the Day



1. Pull the crown to position 3 .
2. Turn the crown clockwise to advance the day hand until the desired day is set .The day hand will advance one day when 04:00 in the morning is reached.
3. Push the crown back to position 1 .

E. Set the Month



1. Set the crown at position 1 .
2. Press A step-by-step to adjust the month to the desired one.
3. Stop pressing the button after finished the setting.

!! Attention !!: Please Do Not use Quick Correction on 31th of each month .

Battery : 371 – SR920SW